



Unlocking Precision Microbiome Management

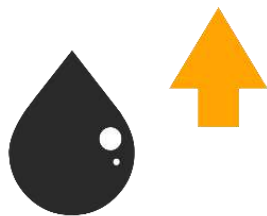
WAS APC-AIC webinar 28-07-2021

Ruben Props, PhD

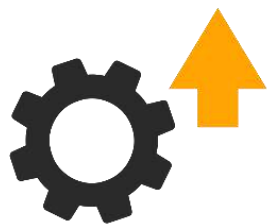
Microbiome Management at Your Fingertips.



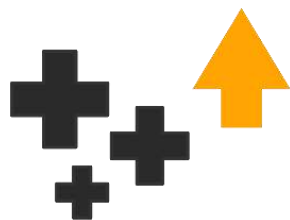
Disease risk



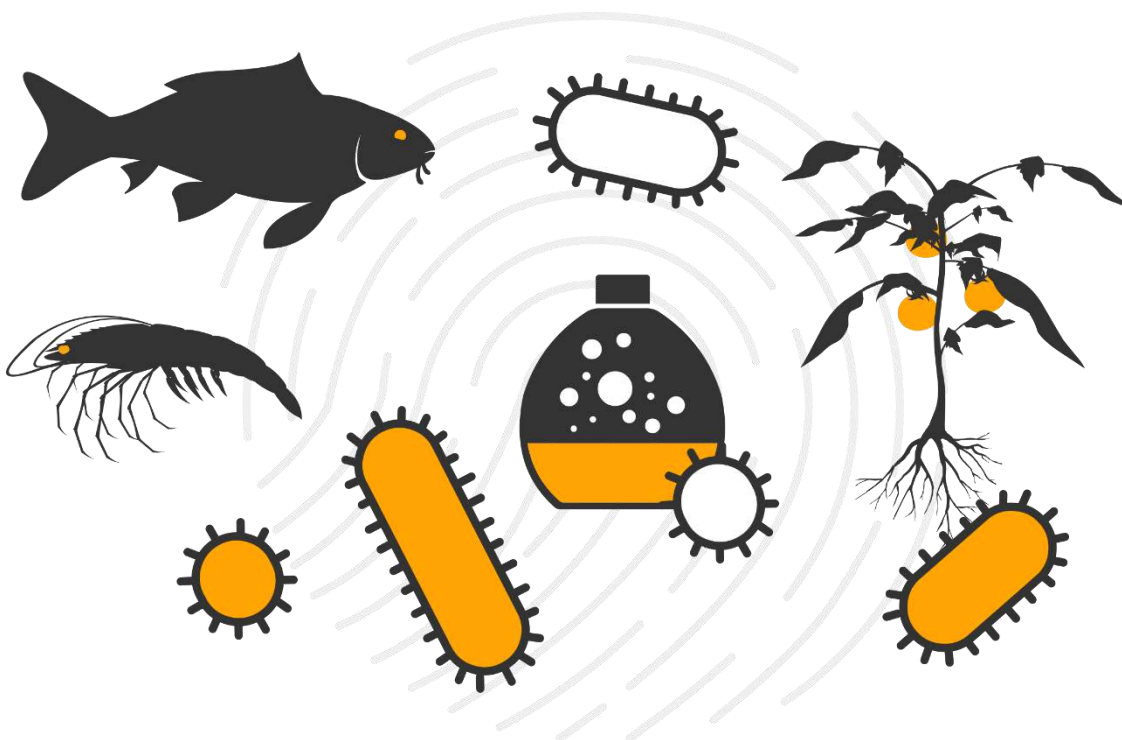
Water quality



Stability



Microbiome health

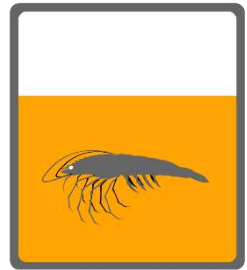


THE MICROBIOME IN A POND

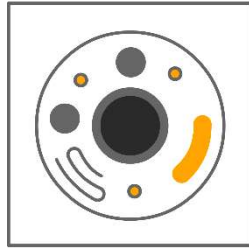
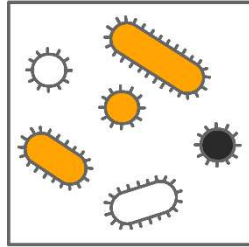
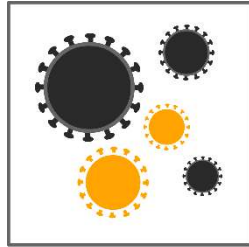


(

MICROBES ARE THE DOMINANT LIFEFORM



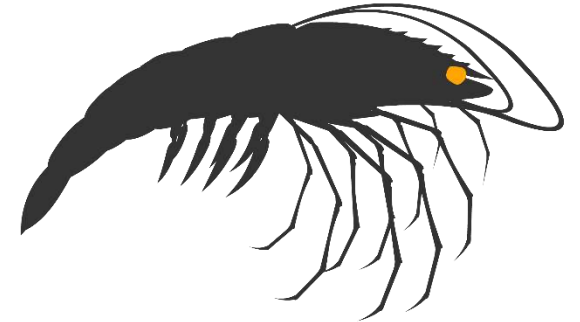
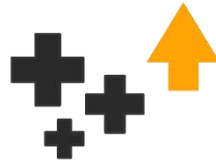
0.25 ha
150 PL/m²



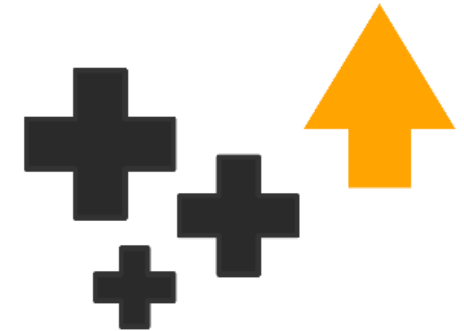
$\sim 3.2 \times 10^{16}$ cells per pond



Microbial community
 ~ 3 million planets of human population



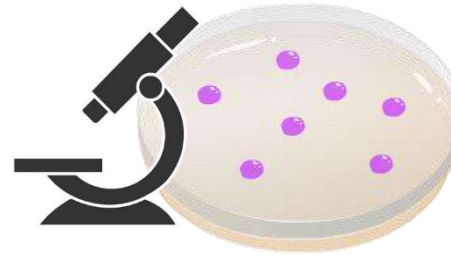
375,000 PL per pond



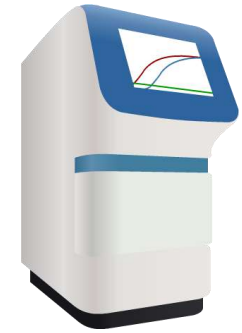
HOW WE MEASURE TODAY



Agar plating
(TCBS, etc)



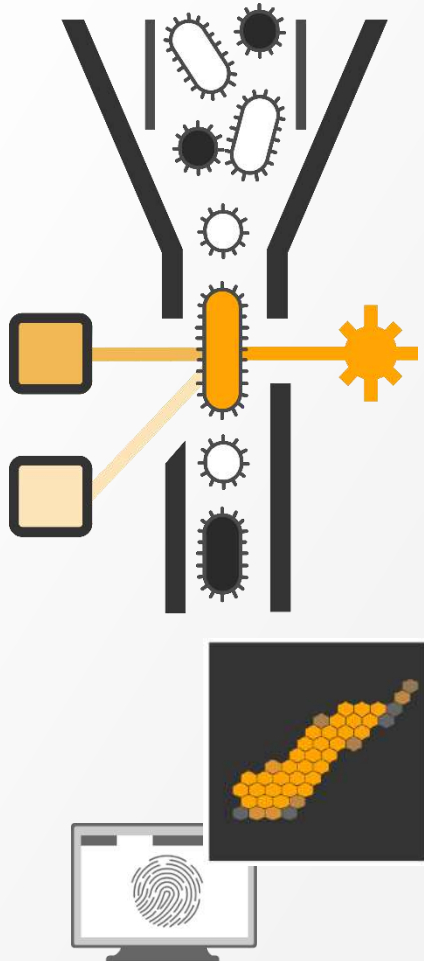
Molecular diagnostics
(qPCR)



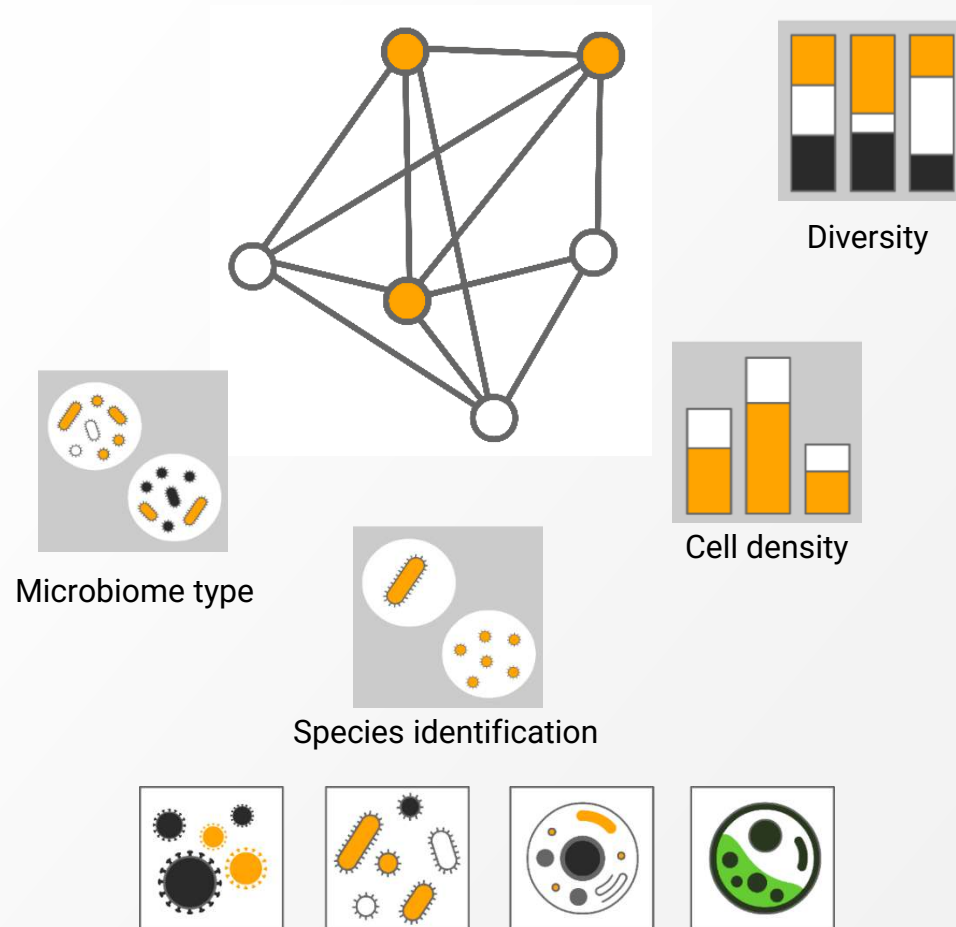
- Miss > 99.9 % of microbes
- Focus exclusively on (opportunistic) pathogens
- Missing important insights
- Erroneous conclusions (dogmas)
- Mismatch with management

THE KYTOS APPROACH

Fingerprinting of Microbial Communities



Supervised Learning to extract Health Information

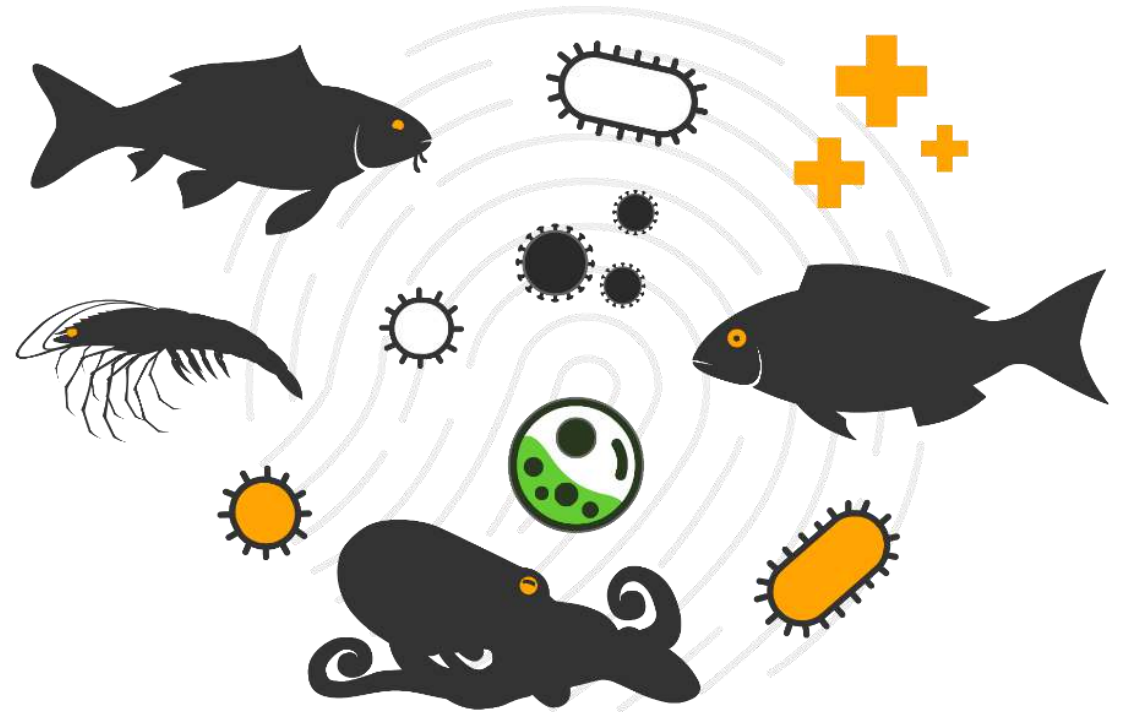


Early Detection of Microbial Threats and Opportunities

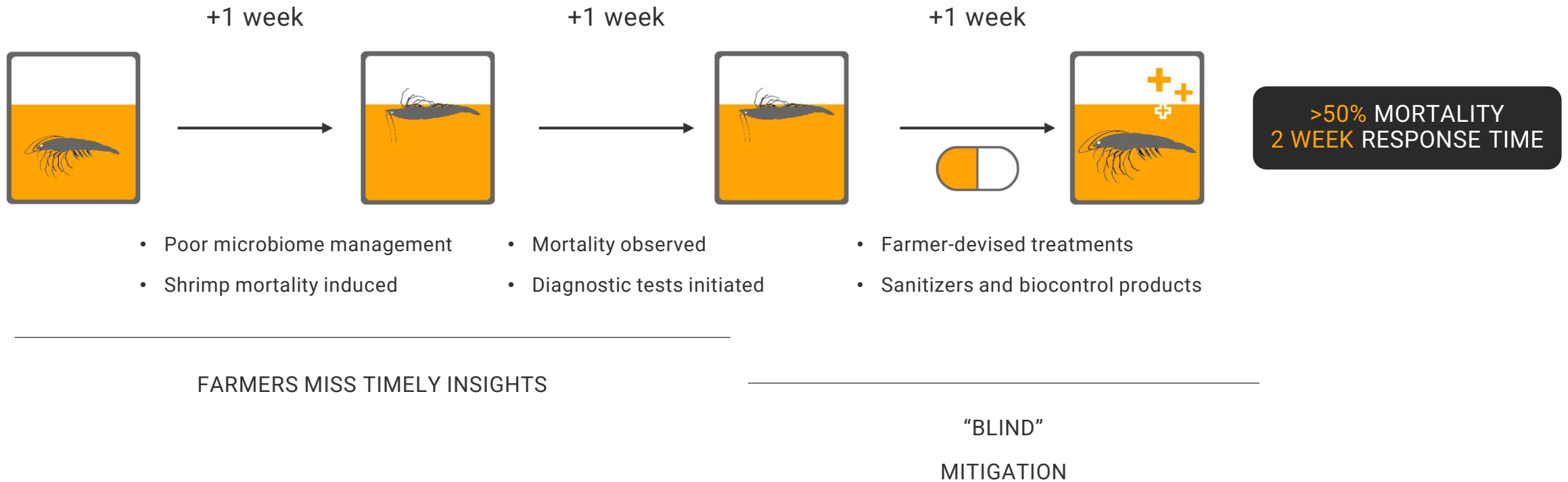


THE ADVANTAGES OF OUR FINGERPRINTING

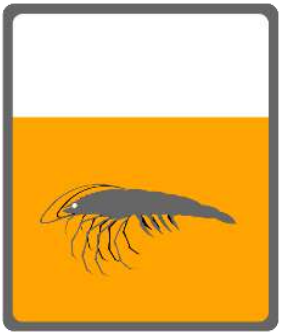
- ✓ Characterization of all cells
- ✓ Accurate profiling of dynamics
- ✓ Up to 1,000,000 data points per sample
- ✓ Meaningful health insights for farmers
- ✓ Actionable insights



HOW WE MANAGE TODAY



HOW WE (SHOULD) MANAGE TOMORROW

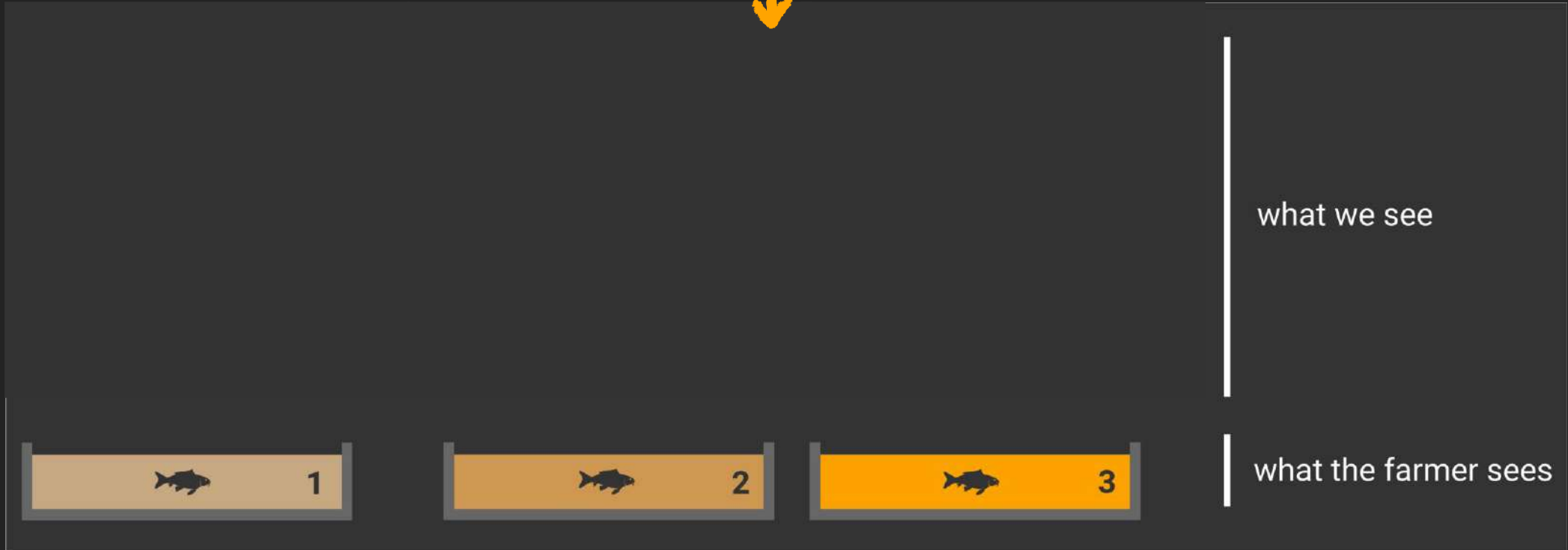


- ✓ Routine screening of microbial fingerprints
e.g. quantifying trophic status of ponds
- ✓ A holistic approach to microbiome management
e.g. algae, bacteria
- ✓ Couple fingerprints to farming practices
e.g. product use, stocking density

A NEED FOR ARTIFICIAL INTELLIGENCE



Every Aquaculture System is Unique



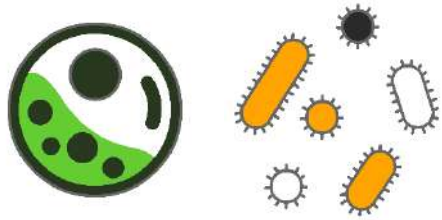
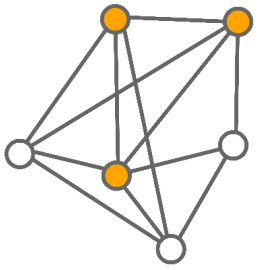
what we see

what the farmer sees

How to make a difference ...



THREE EXAMPLES



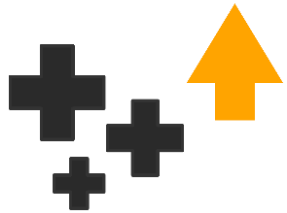
Steering farming practices

Quantifying Heterotroph/Autotroph balance



Identifying the right moment for product dosing

Dosing biocontrol products



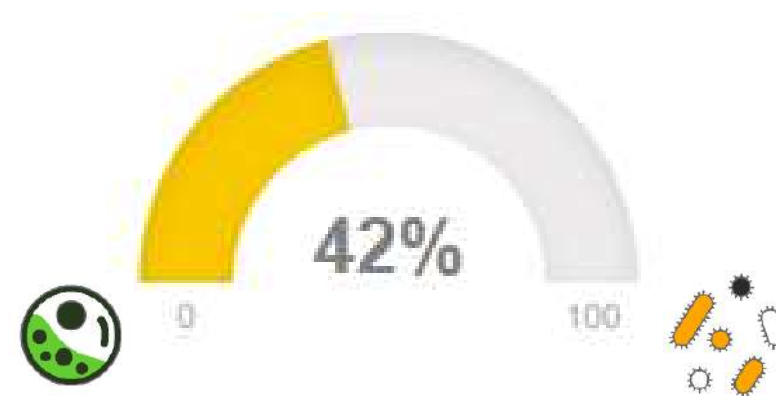
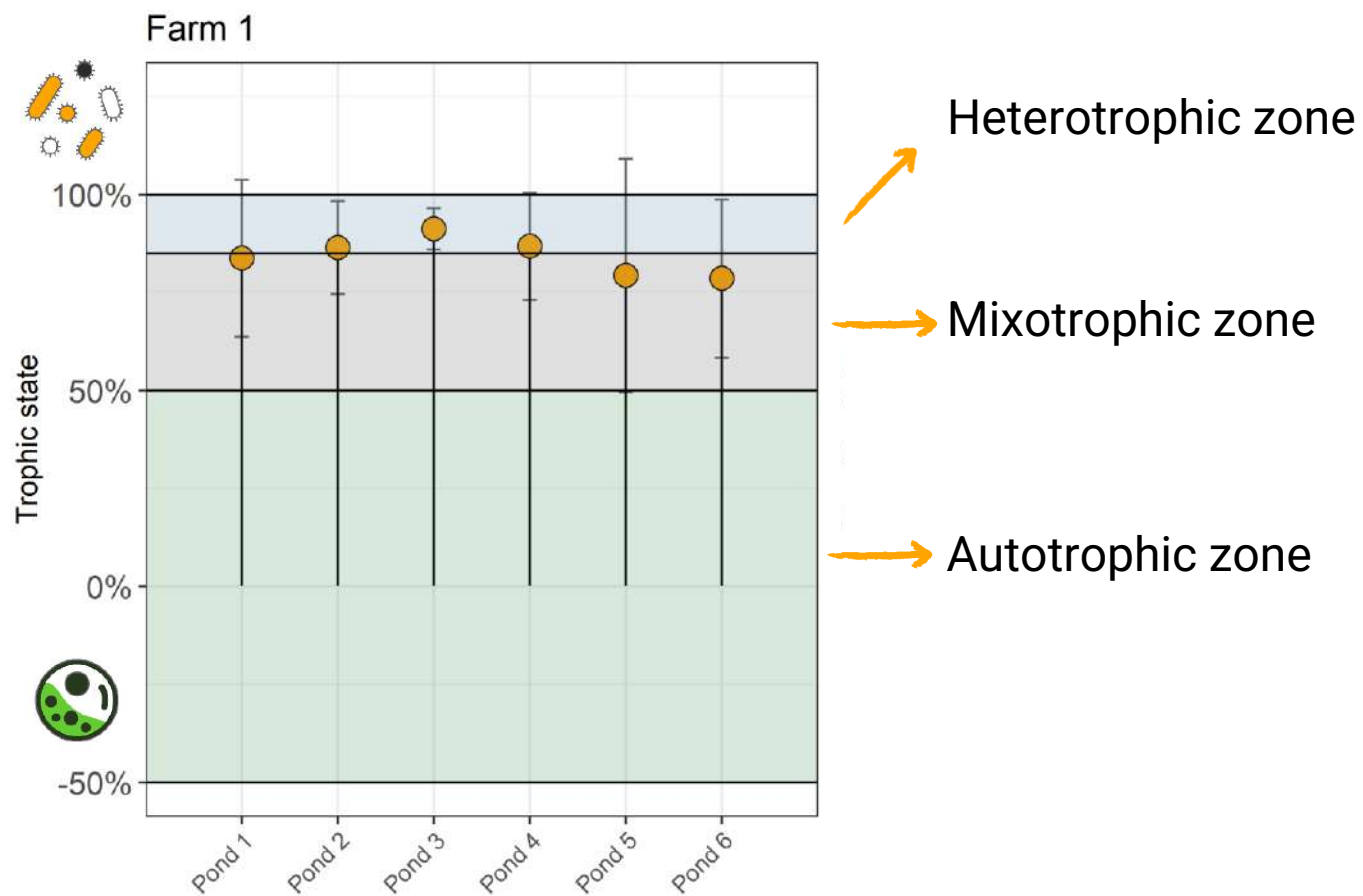
Predicting pond performance

Survival at harvest

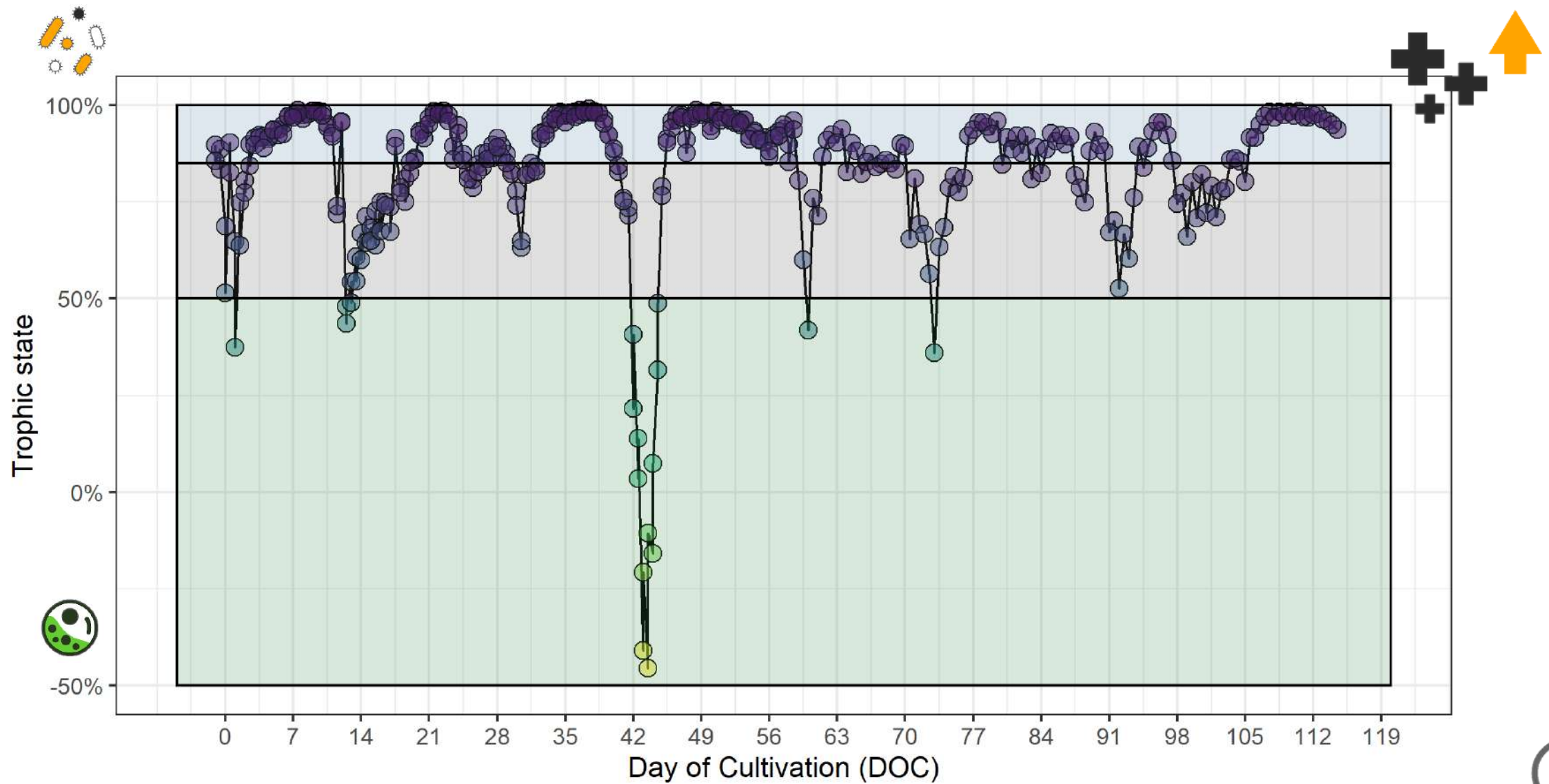


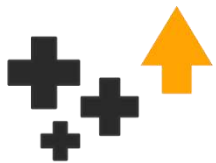
Helping farmers **steer the microbiome** in their pond

Heterotrophic farm
(~biofloc?)



Helping farmers **steer the microbiome** in their pond





Helping farmers know what's best for their pond

Microbiome health

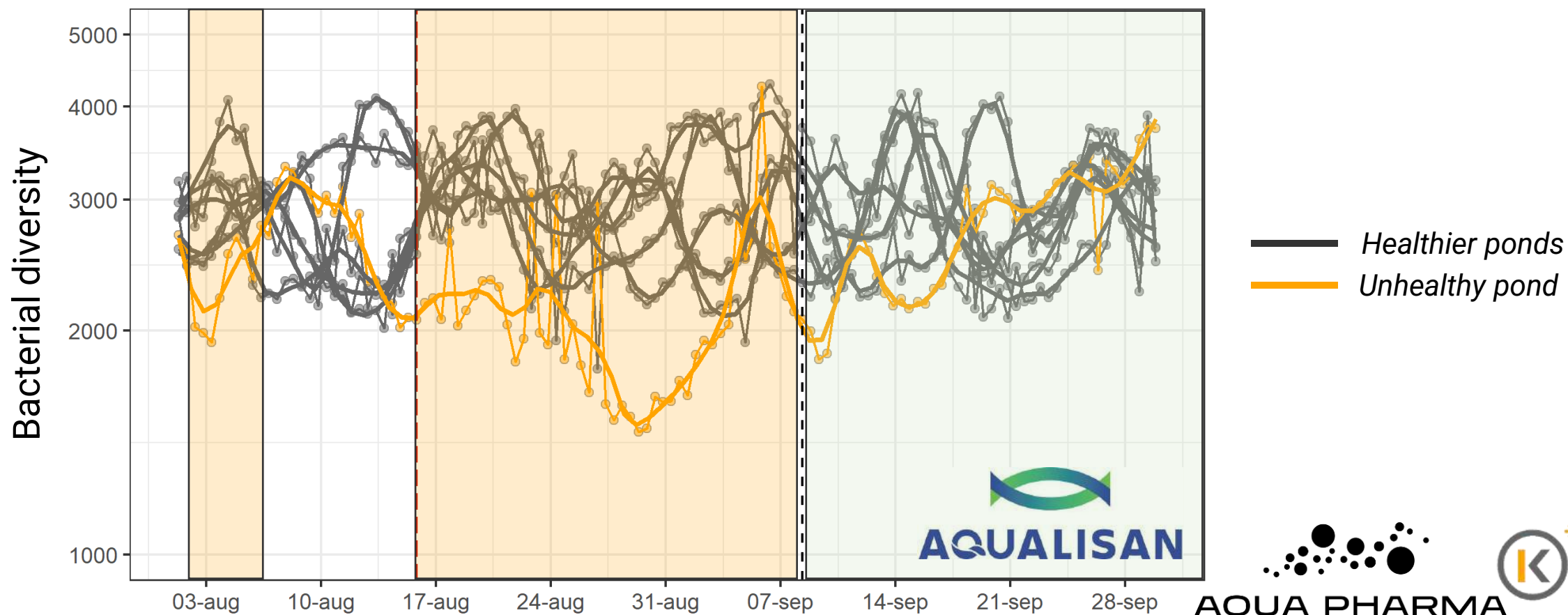
First deviation observed at stocking

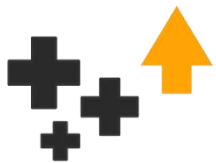
- Decreased diversity
- Uncontrolled growth

Farmer's first observation of mortality at 07/09

Emergency protocol initiated
Recovery of microbiome health

~1 month





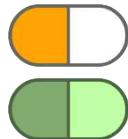
Helping farmers know what's best for their pond

Microbiome health

Sanitizer

+

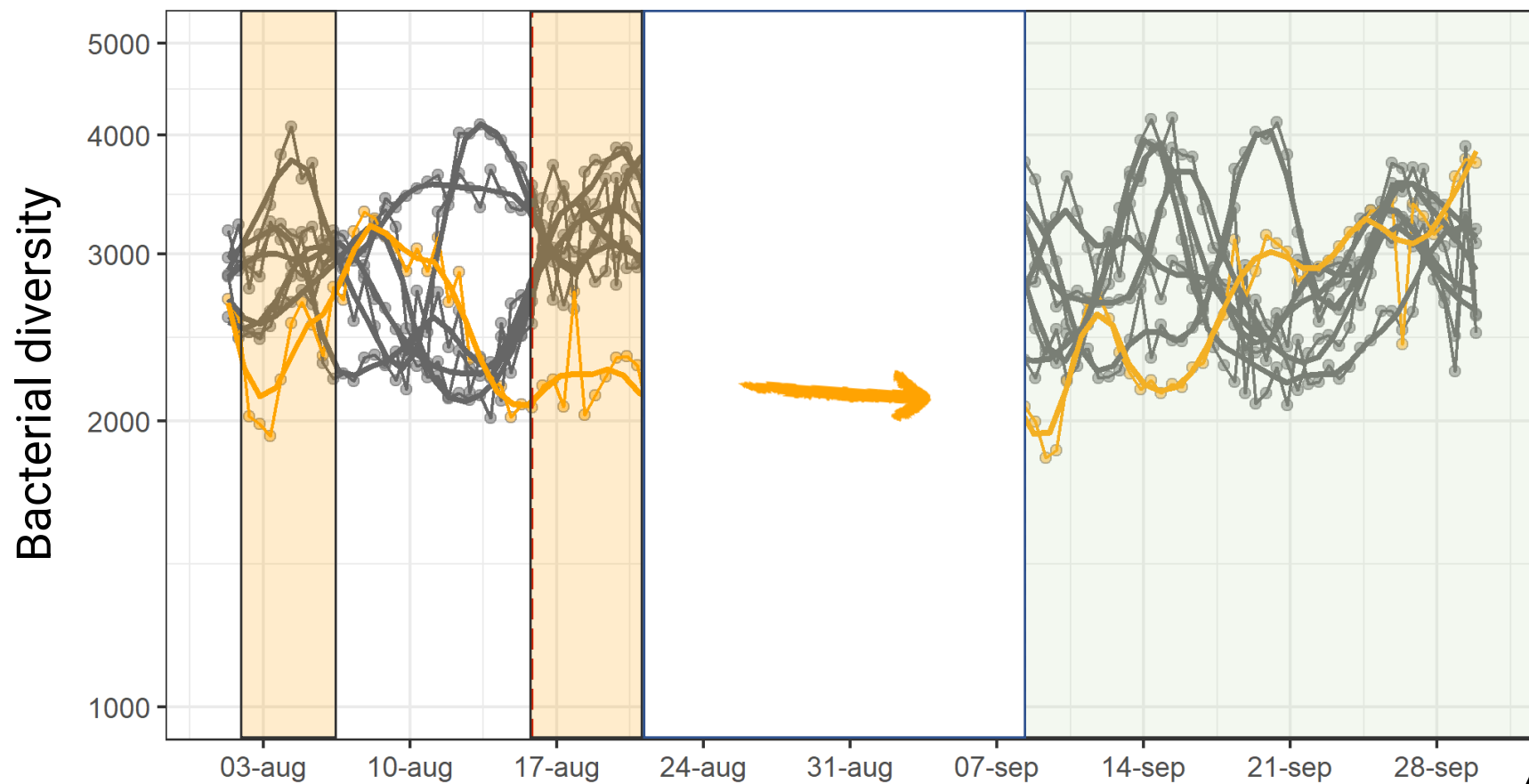
Probiotic



Sanitizer



Probiotic



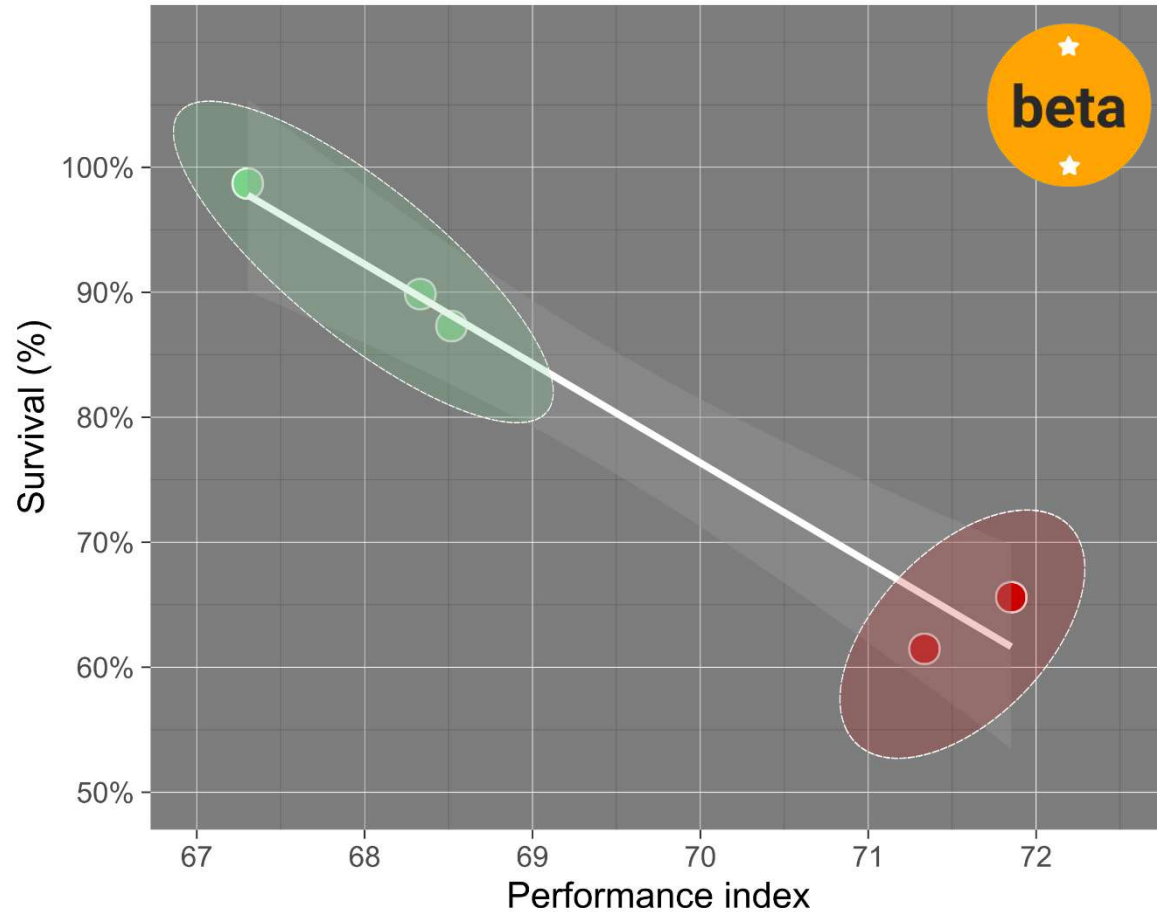
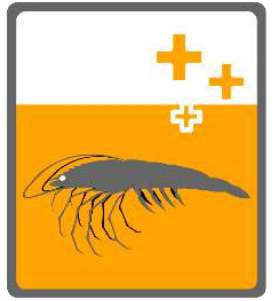
AQUA PHARMA





Stability

Helping farmers get the most out of their pond



* Data from 5 individual commercial ponds

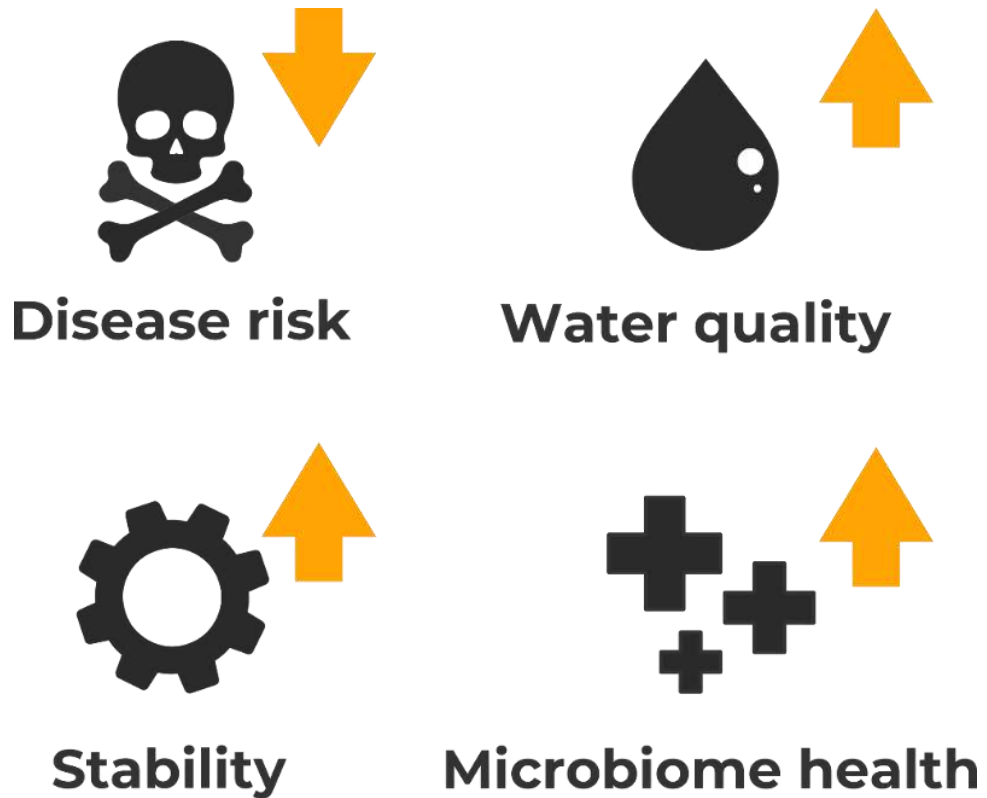
Measure microbiome for 2 months



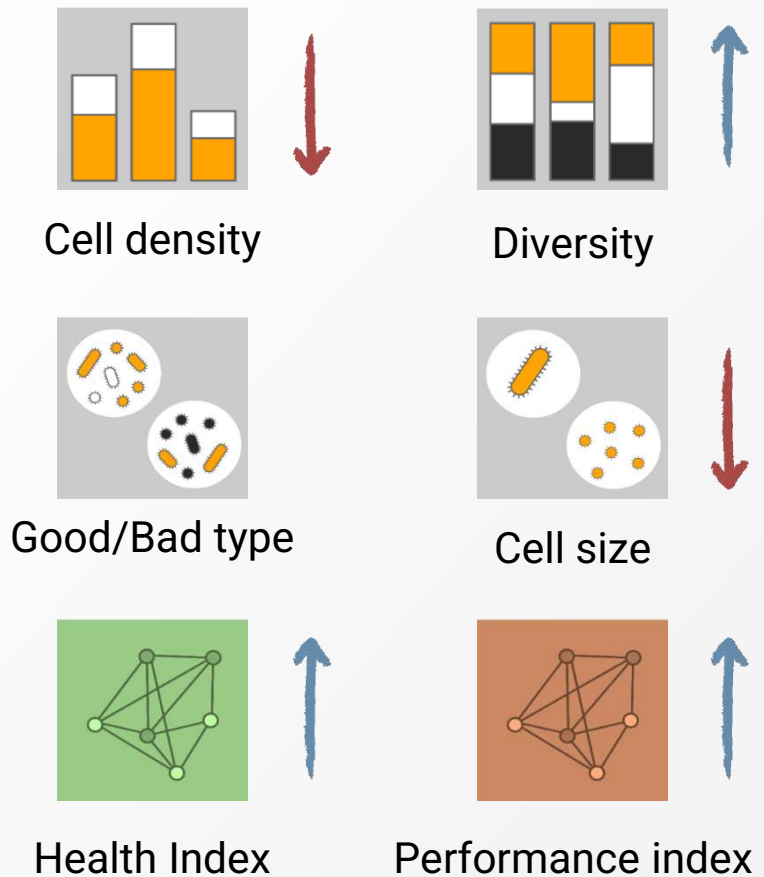
Predict shrimp survival after 4 months



We are only **scratching the surface...**



Microbiome Health Indicators



WE ARE EXPANDING OUR ACTIVITIES WORLDWIDE



Meet us at



AQUA NOR



SEATRU

PRECISION MICROBIOME MANAGEMENT SOLUTIONS

a data intelligence platform with



[illegible]

PHONE: +32 485 022 896
INFO@KYTOS.BE

EMPOWERING AQUACULTURE PRACTITIONERS

KYTOS

Home

Single sample

Multiple samples

Performance

Algae

Quality control

Export & Reports

Log out

Disclaimer

General Terms

Special Terms

© 2021

Analysis time

2020-08-01

to

2021-01-30

Project

Analysis type

Bacteria

Quality check

High, Lower

Axis X

Analysis time

Axis Y

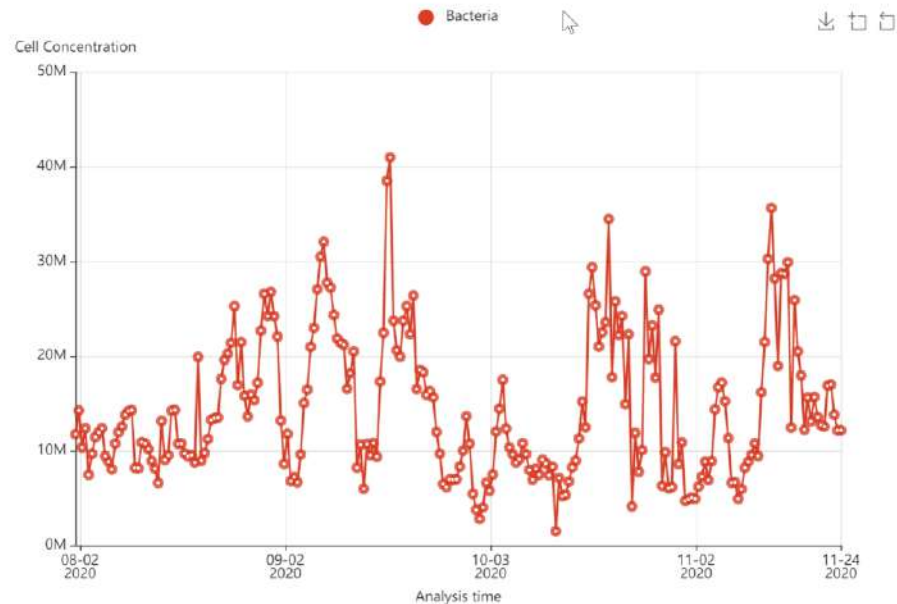
Cell Concentration

Axis Y Scale

Arithmetic

Groups

All groups



Y Axis: Concentration of microbial cells in your sample expressed in cells per milliliter (mL).

Axis X

Analysis time

Axis Y

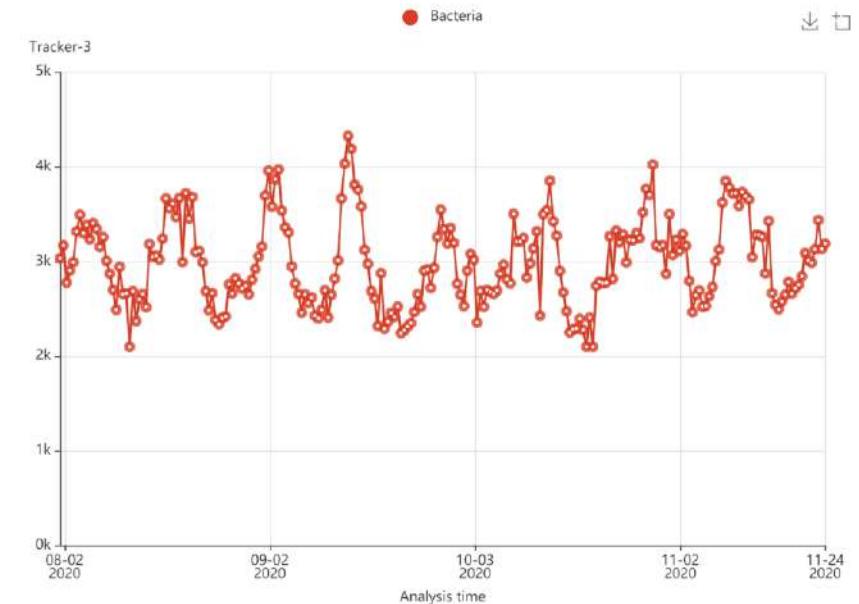
Tracker-3

Axis Y Scale

Arithmetic

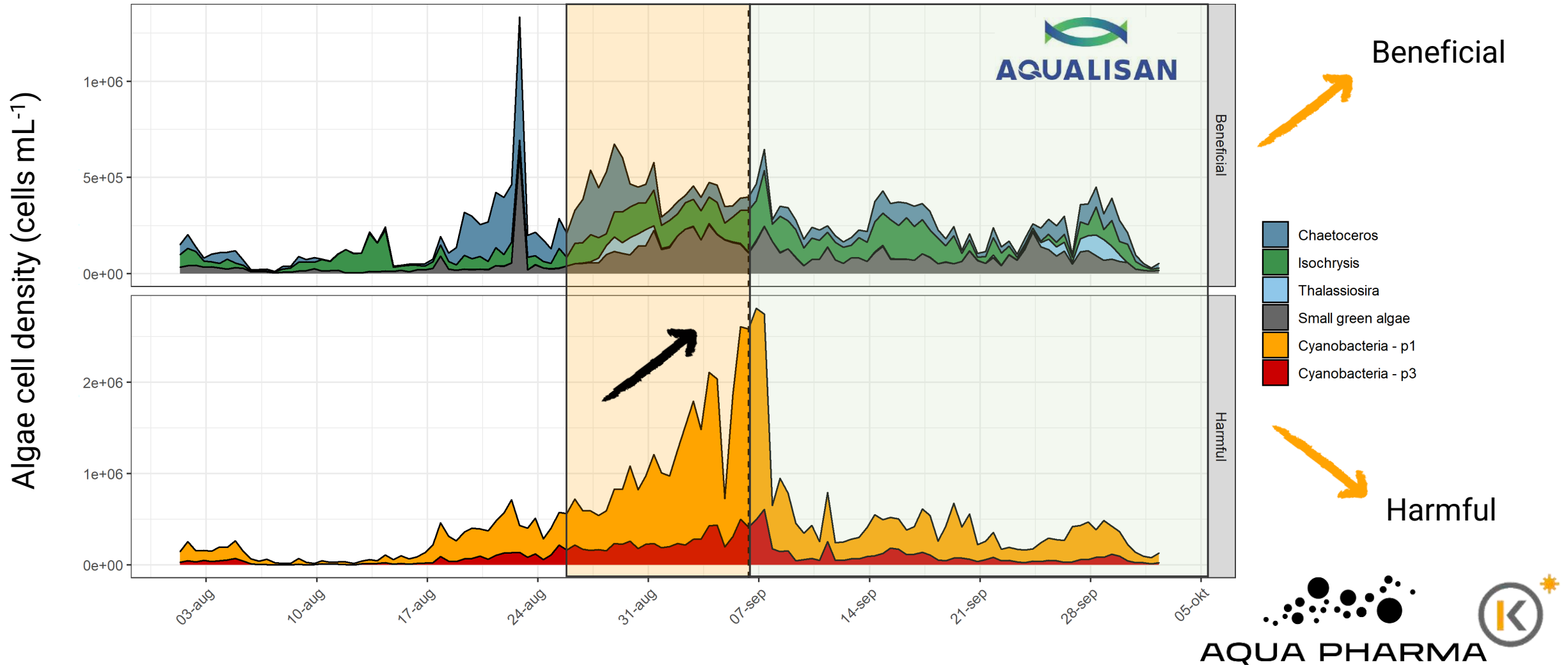
Groups

All groups

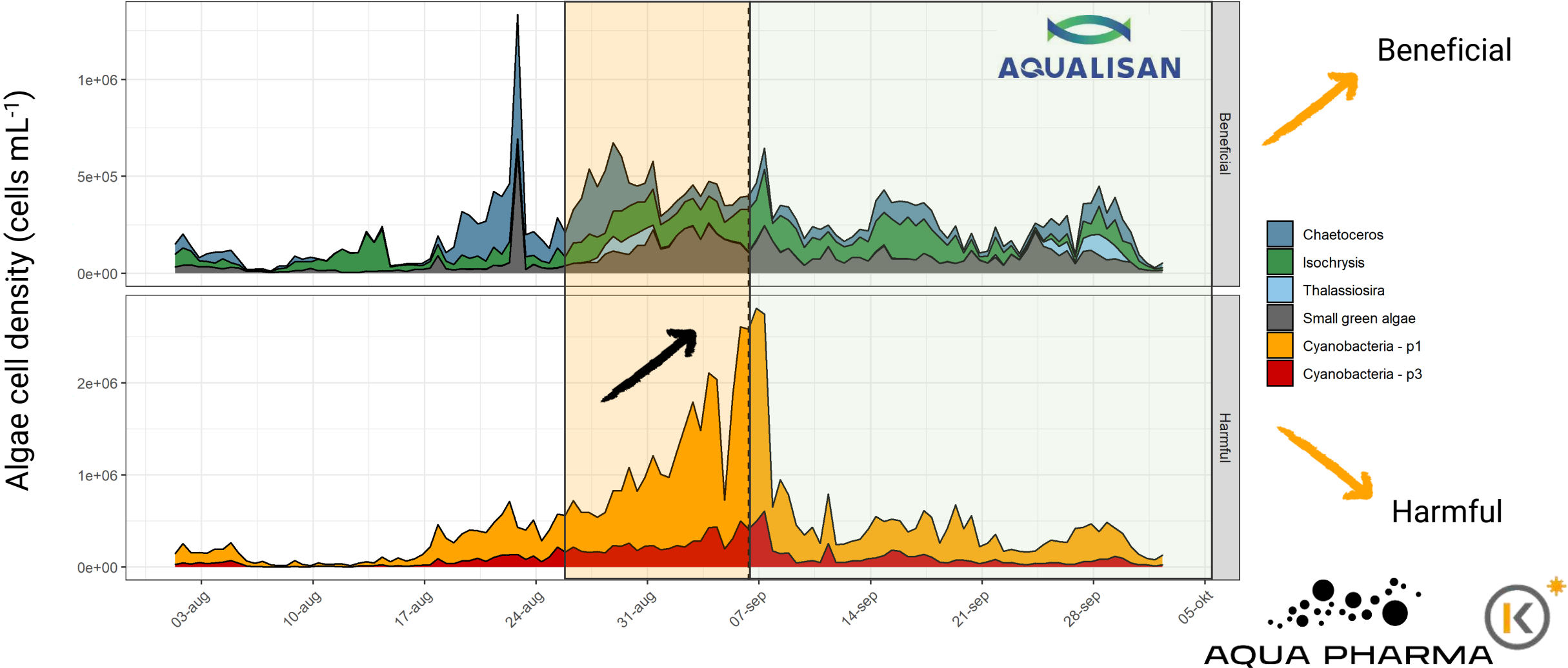


Y Axis: Sample metric for detecting changes in the microbial community. This metric represents the number of unique cell types but gives the most importance to abundant cell types. High values indicate many unique cell types, low values indicate fewer unique cell types.

Case study 3: observing algae problems



Case study 2: managing algae problems



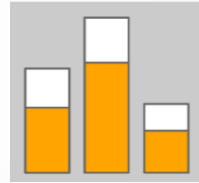
Big Data from a Small Sample



1 milliliter
of sample



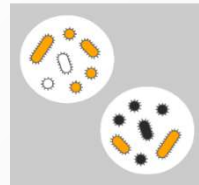

Microbiome Health Indicators



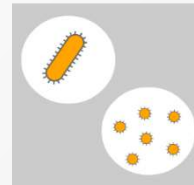
Cell density



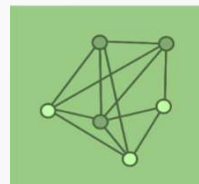
Diversity



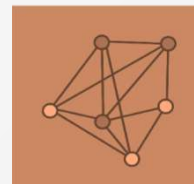
Good/Bad type



Cell size



Health Index



Performance index



Characterize and define
healthy microbiome
conditions



KYTO^{vial}

The preservation solution for your water samples

- Long-term preservation solution for water samples
- Reduces bio-security risks during storage and transport
- Enhances quality of flow cytometry analysis
- Small footprint enables rapid and frequent sampling

